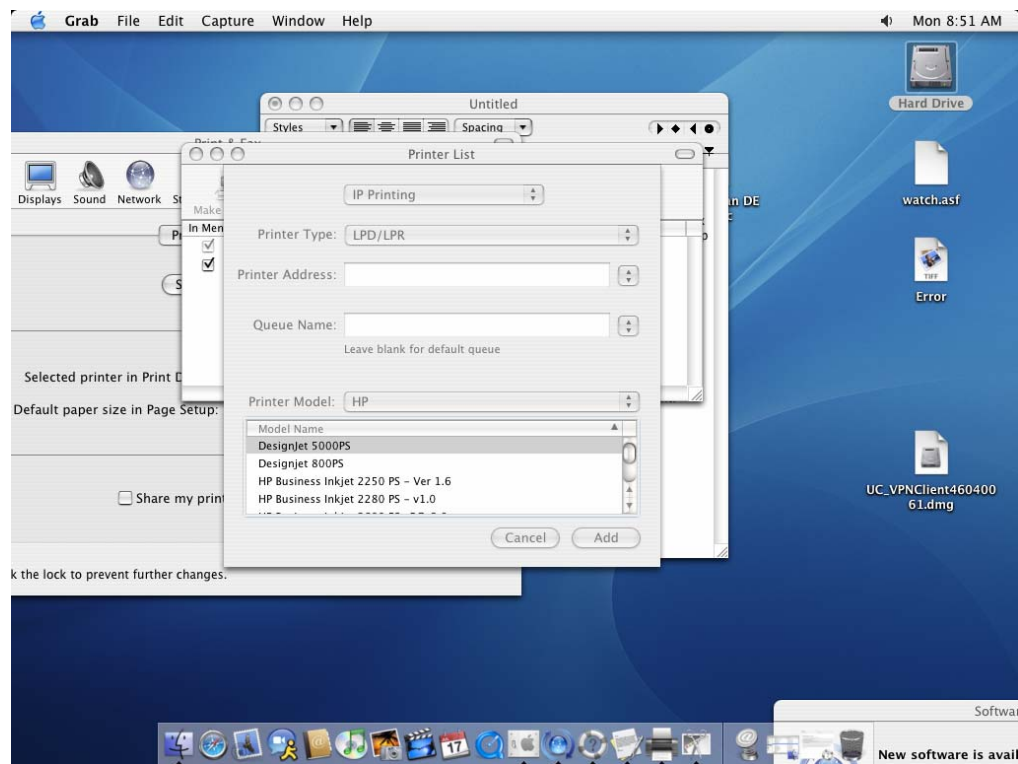


Mobile Printing for MAC OS X Users

These instructions will help users to setup a printer on a MAC laptop connected to the UC Wireless Network to print to an AITL designated Uniprint Printer in MSB, CVC, or Kettering buildings.

1. Open System Preferences and click Print & Fax.
2. Click Printing, and then click the Set Up Printers button.
3. Click the Add Printer button.
4. Choose IP printing and LPD/LPR for Printer Type
5. For the printer address select the printer from the Port Name list below.
6. Choose the corresponding printer queue name from the list below.
7. Select the correct printer driver.
8. When all the information has been entered click the Add button to finish.



<u>Printer and Location</u>	<u>Port Name</u>	<u>Queue Name</u>	<u>Driver</u>
Printer 1 E680 MSB	printsrv1.ucprint.uc.edu	aitl.printer1.q	HP 4240 ¹
Printer 3 E680 MSB	printsrv1.ucprint.uc.edu	aitl.printer3.q	HP 4100
Printer 2 E680 MSB	ps2.ucprint.uc.edu	aitl.printer2.q	HP 4240
Printer 4 E680 MSB	ps2.ucprint.uc.edu	aitl.printer4.q	HP 4240
Printer 5 E680 MSB	printsrv1.ucprint.uc.edu	aitl.printer5.q	HP 4240
Printer 8 E460 MSB	printsrv1.ucprint.uc.edu	aitl.printer8.q	HP 4240
Printer 9 E680 MSB	printsrv1.ucprint.uc.edu	aitl.printer9.q	HP 4600
Printer 10 Grad Study	printsrv1.ucprint.uc.edu	aitl.printer10.q	HP 4100
Printer 11 E680 MSB	printsrv1.ucprint.uc.edu	aitl.printer11.q	HP 4600
MCDO Dean's Office	printsrv1.ucprint.uc.edu	aitl.mcdo.q	HP 5N
Kettering Atrium	ps2.ucprint.uc.edu	aitl.atriumkett.q	HP 4240
Path Labs MSB	ps2.ucprint.uc.edu	aitl.path.q	HP 1300 ²

¹ The Laserjet 4240 driver can be obtained from [HP's website](#)

² The Laserjet 1300 driver can be obtained from [HP's website](#).