

The University of Cincinnati's central IT group – UCit – has moved to a new, more secure Virtual Private Network (VPN) client for use when connecting to university internal networks while off campus. This new client, Juniper, went into effect June 2009 and is now the sole VPN access route.

The new VPN is available at: <http://sslvpn.uc.edu>

The first time users start the VPN, it will install the Juniper client for them. After that first time, there is very little delay in accessing the VPN.

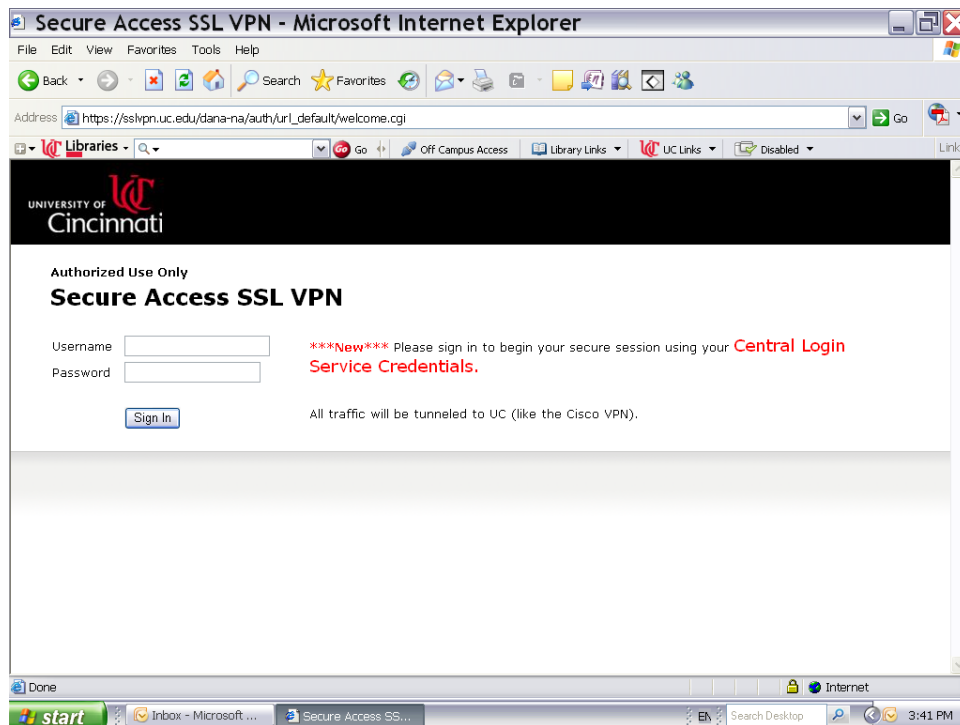
Juniper gives users the full capability that the Cisco VPN solution provided previously. Additionally, now that the new e-mail exchange (2007) has been stalled installed, users **no longer need to connect to VPN** to use Outlook. Simply launch Outlook and go! ☺

For more information about this VPN Client access, visit:

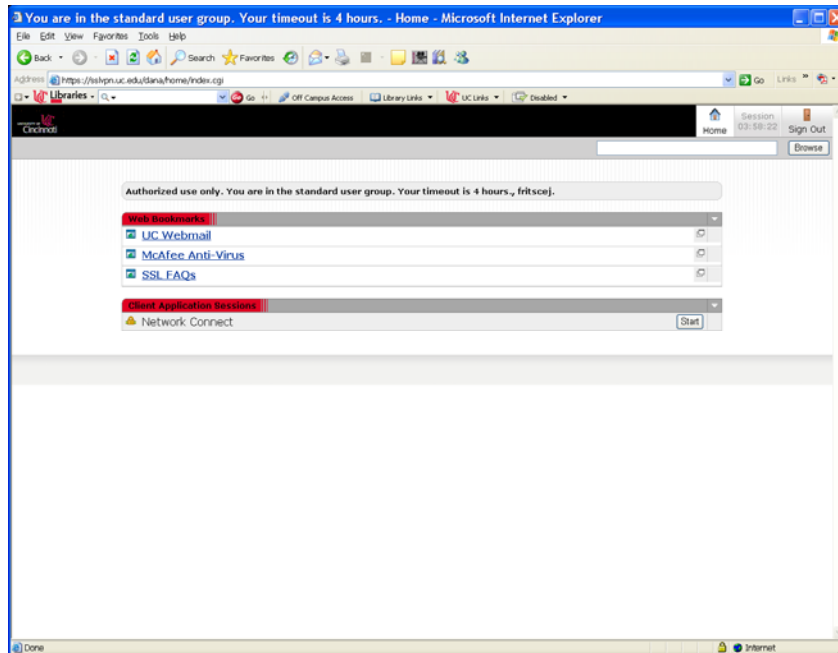
http://www.uc.edu/ucit/access/VPN/SSL_VPN_%28Virtual_Private_Network%29_FAQ.html

Instructions for access, installation, and use of the Juniper/SSL VPN client:

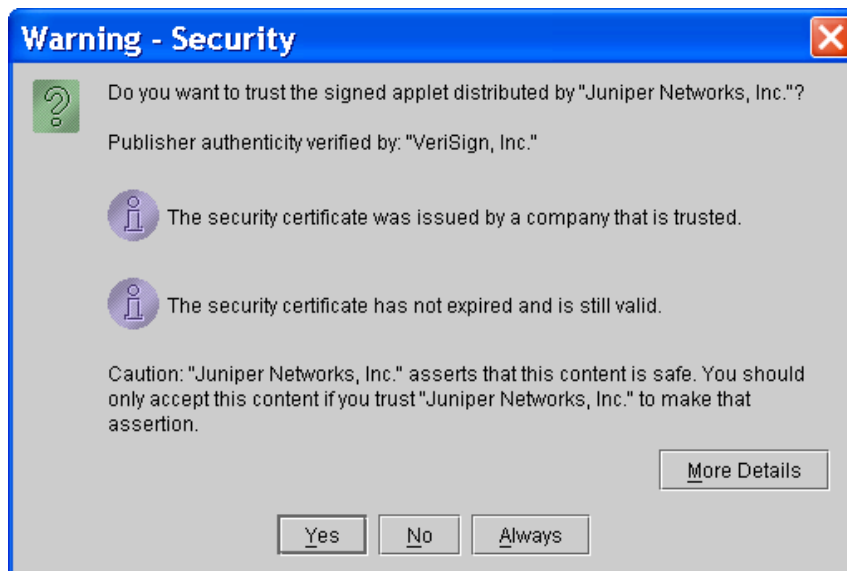
1. Go to: <http://sslvpn.uc.edu>
Login with your Central Login Services credentials (used for other services such as...).



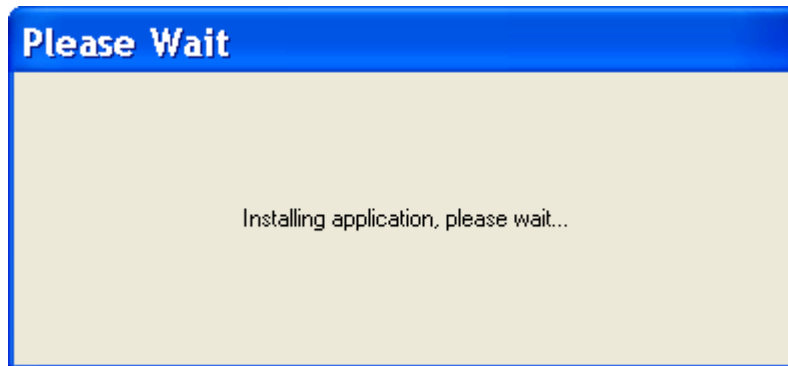
2. On this page click on the "Start" button to the right of "Network Connect".



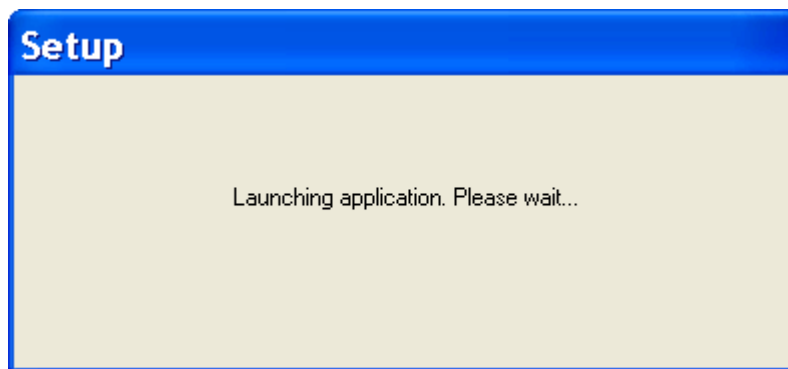
3. You will be presented with a Security Warning dialog box indicating this is a trusted certificate and it is safe to proceed to the next step. Click "Always".



- You will then be presented with a “Please wait...” dialog box indicating that the Juniper client is being installed.



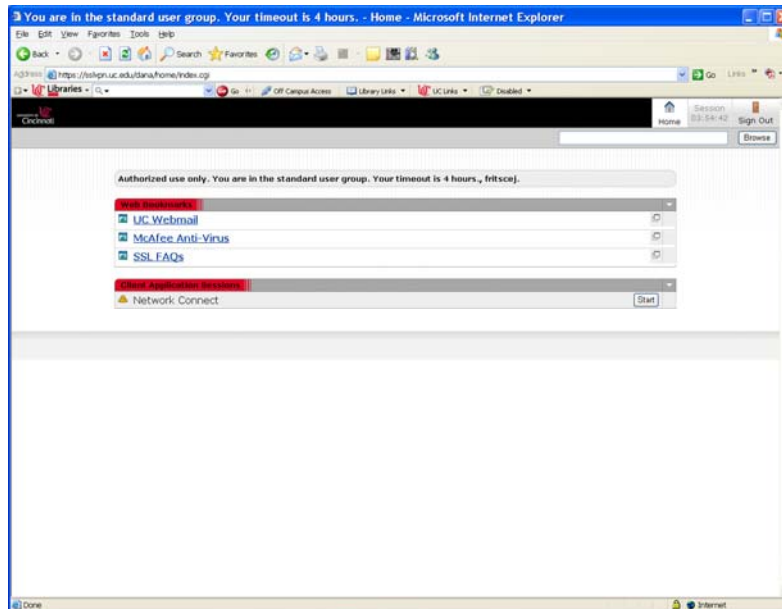
- Then it will present a “Setup” dialog box indicating it is launching the now installed application.



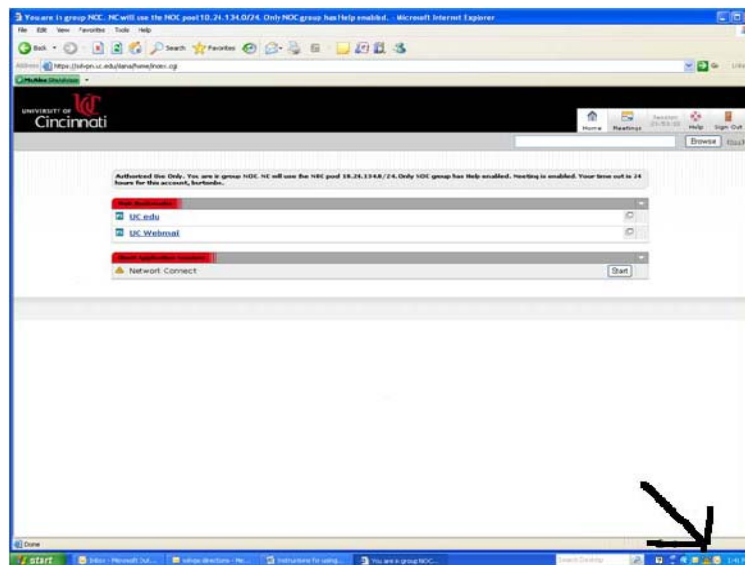
- Next you will be presented a dialog box “Network Connect” which will display details of your initiated session.



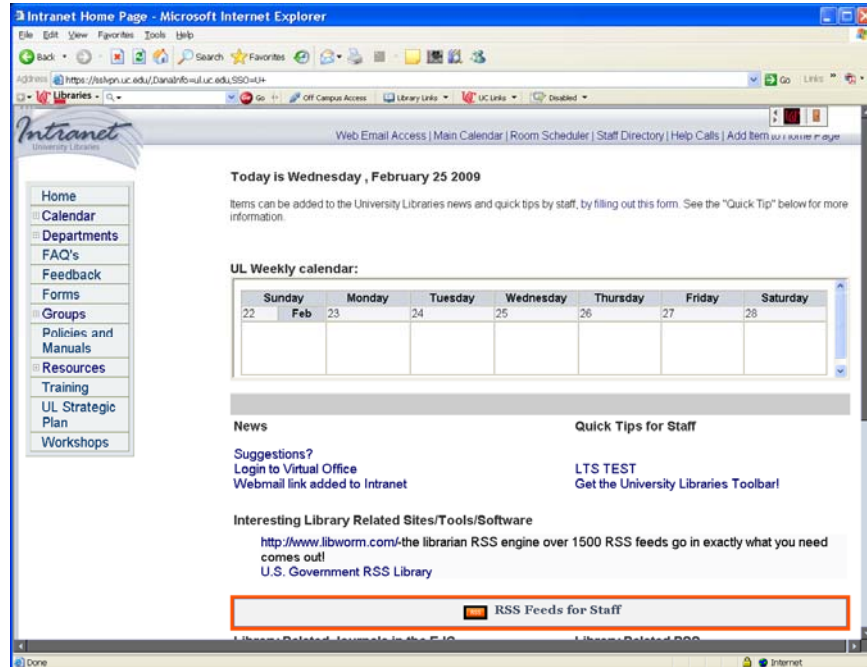
7. You will then be returned to the “Network Connect” screen complete with an address bar on the right preceded by a “Browser” button. Enter your desired url here and click on the “Browse” button to proceed.



...and you will see a little icon at the bottom right by the clock that indicates you are logged into the ssl vpn service.



8. Once you reach your destination you will be presented a small toolbar on the right of the screen that will only be present for this initial jump. You will also notice in the address bar, much like our off campus access, the ssl.vpn.edu in the address bar indicating that you are logged into the SSL VPN service. It may also only contain something like this “...%login%...”



9. At the bottom right of your screen near the clock this new icon allows you to see your options, sign-out, and see how long your session has been among other functions. Simply sign-out when you are finished.

